

**AIRFLOW SCHEDULE**

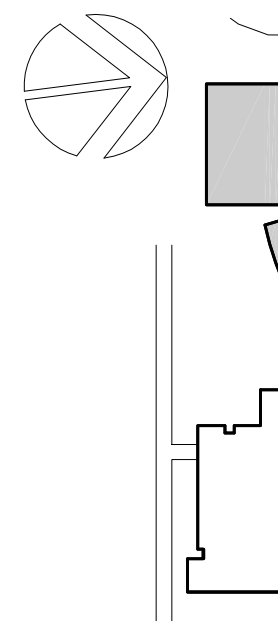
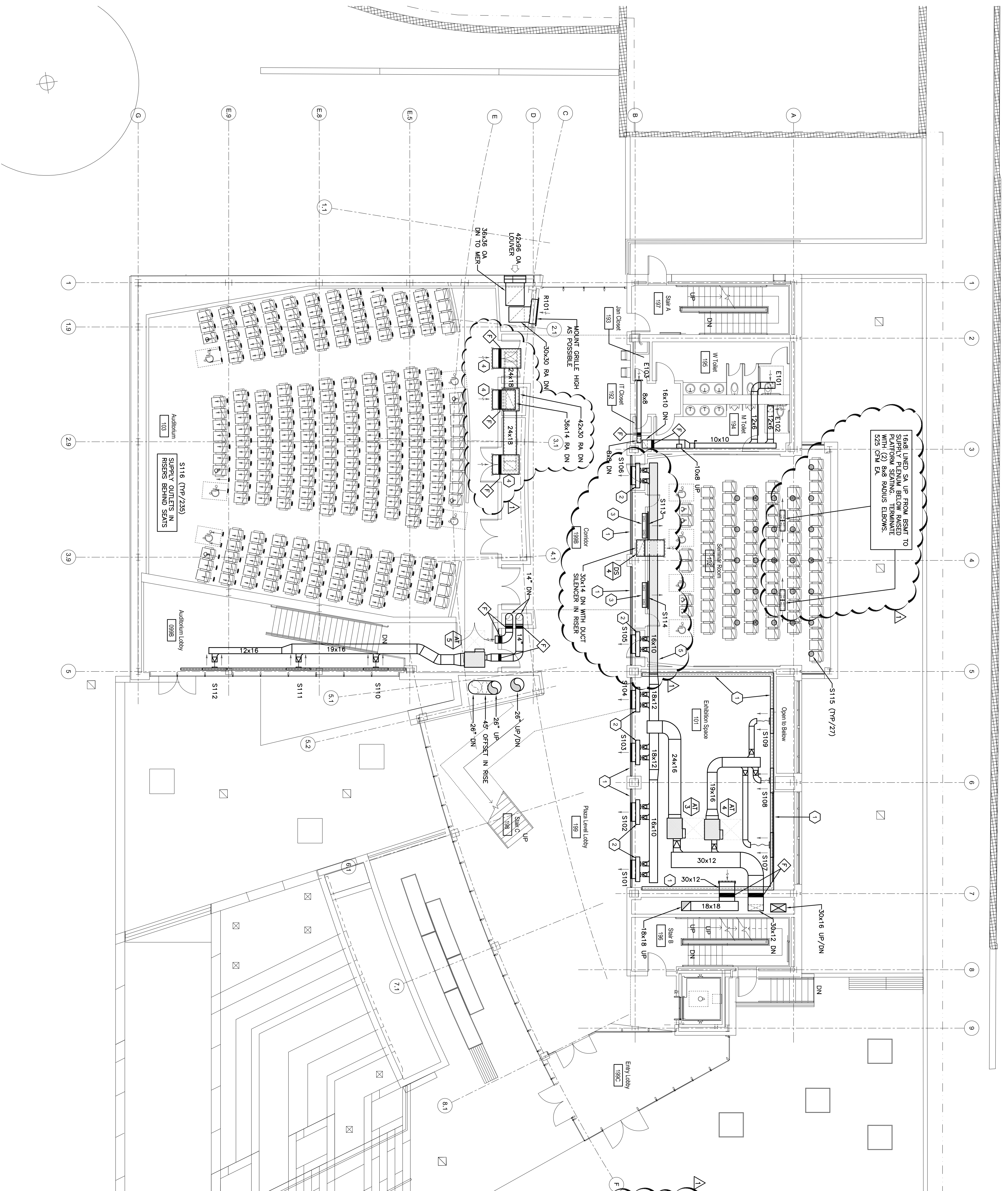
TAG	ROOM	SYSTEM	TERMINAL UNIT	CFM	TYPE	SIZE (IN)	NC
S101	199	AHU-3	AT-03	400	SD-3	36	25
S102	199	AHU-3	AT-03	400	SD-3	36	25
S103	199	AHU-3	AT-03	400	SD-3	36	25
S104	199	AHU-3	AT-03	400	SD-3	36	25
S105	199B	AHU-3	AT-03	400	SD-3	36	25
S106	199B	AHU-3	AT-03	400	SD-3	36	25
S107	101	AHU-3	AT-04	400	SD-4	48	22
S108	101	AHU-3	AT-04	400	SD-4	48	22
S109	101	AHU-3	AT-04	400	SD-4	48	22
S110	099B	AHU-3	AT-05	400	SD-5	48	25
S111	099B	AHU-3	AT-05	400	SD-5	48	25
S112	099B	AHU-3	AT-05	400	SD-5	48	25
S113	102	AHU-2	LB-1	225	LB-1	48x18	<20
S114	102	AHU-2	LB-1	225	LB-1	48x18	<20
S115	103	AHU-1	PD-1	39	PD-1	4"	<15
S116	103	AHU-1	SD-2	19	SD-2	4"	<15
R101	199B	AHU-3	RG-2	5600	RG-2	48x54	25
E101	195	EF-1	EG-1	225	EG-1	10x10	-
E102	194	EF-1	EG-1	225	EG-1	10x10	-
E103	193	EF-2	EG-1	100	EG-1	8x8	-

**KEYED NOTES**

- CONTINUOUS SLOT DIFFUSER AS SCHEDULED. PROVIDE END CAPS, MITERED CORNERS AND ACCESSORIES REQUIRED FOR CONTINUOUS APPEARANCE WITH ACTIVE SECTIONS AS SCHEDULED.
- CUSTOM ANGULED PLENUM, 8" WIDE X 12" HIGH, 8" DUCT CONNECTIONS.
- 8" DEEP ACQUISITONALLY LINED PLENUM FULL SIZE OF SUPPLY GRILLE WITH (2) TOP LINED SUPPLY DUCTS UP FROM BACKREST AND TAP INTO BOTTOM OF PLENUM. MOSTLY BOTTOM OF GRILLE OR AFT.
- AUDITORIUM CEILING. LOCATE AS HIGH AS POSSIBLE IN BEAM POCKET. RETURN INLET. LOCATE AS HIGH AS POSSIBLE IN RISER TO ALLOW ACCESS FROM OPEN END.
- CONSTRUCT DUCT OF 18 GAUGE WELDED SHEET STEEL. FLEXIBLE CONNECTIONS ARE NOT ALLOWED IN SEMINAR ROOM.

**GENERAL NOTES**

- PILING AND SHEETPILE COORDINATION DRAWINGS ARE REQUIRED. SET SPECIFICATIONS FOR DETAILED REQUIREMENTS FOR PREPARATION OF ELECTRONIC SHOP DRAWINGS AND COORDINATION BETWEEN TRADES.
- PROVIDE FLEXIBLE CONNECTIONS AT INLET AND OUTLET OF INLINE FANS.
- FLEXIBLE CONNECTIONS AT AIR TERMINAL INLETS ARE NOT ALLOWED. TRANSITION TO AIR TERMINAL INLET SIZE AT CONNECTION.
- FLEXIBLE DUCT SHALL BE LIMITED TO A MAXIMUM LENGTH OF 3'-0".
- PROVIDE ACCESS DOORS LOCATED TO ALLOW OBSERVATION AND INSPECTION OF FLEXIBLE LINES IN FIRE DAMPERS AND FINE SMOKE DAMPERS.



**Owner:**  
SUNY Stony Brook  
20 Suffolk Road  
Stony Brook, NY 11794  
631-432-3077

**Construction Manager:**  
URS Corporation  
One Penn Plaza, Suite 610  
New York, NY 10001  
212-512-6354

**Architect:**  
Miller & Pope  
572 Main William Road  
Melville, NY 11747  
631-427-5665

**MEP:**  
Excel Engineering, PC  
29 Brillen American Blvd  
Latham, NY 12110  
518-464-0412

**Lighting:**  
Lighting Design, PC  
22 Brillen American Blvd  
Latham, NY 12110  
518-464-0412

**Food Service:**  
Romano Garland  
2000 Main Street  
Lindenvest, NY 11757  
631-228-7100

**Fountain:**  
Delta Fountain  
54 Eisenhower St, Suite 20  
Latham, NY 12110  
645-758-3078

**PROJECT TITLE:**  
Simons Center for  
Geometry and Physics

SUNY Stony Brook Main Campus  
Stony Brook, NY

**PROJECT No:** 30891.00

**DRAWING TITLE:**  
FIRST FLOOR  
DUCTWORK PLAN

**SCALE:** 1/8"=1'-0"

**M101**

MEP Bid Documents

February 17, 2009